



MONTHLY MEMBERSHIP PROGRESS REPORT

District 5M 8

Results as of: 6/30/2015

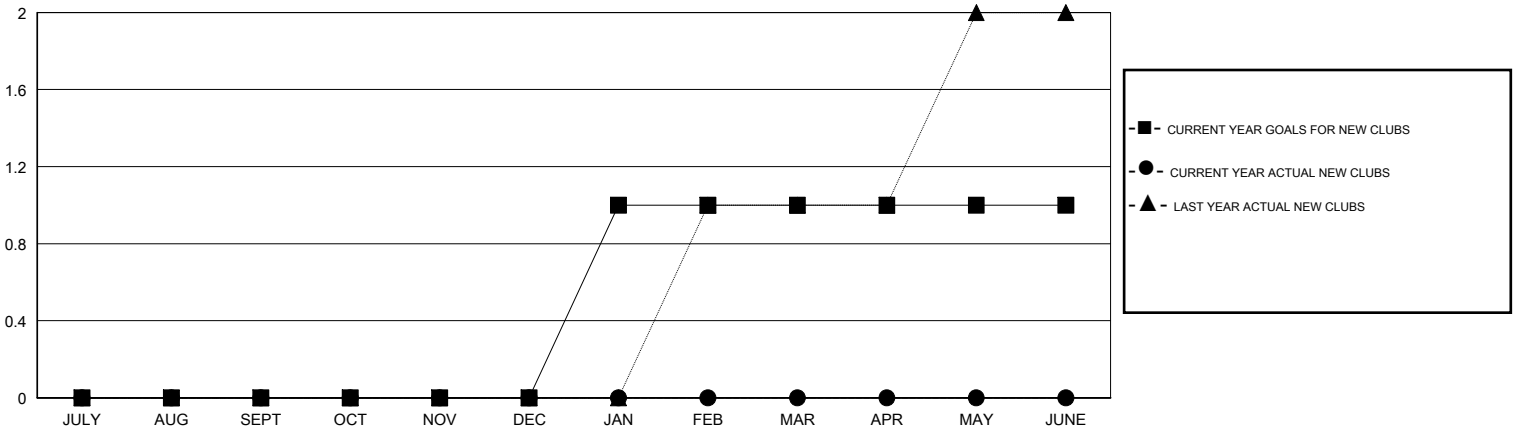
GMT: Judy Hankom

LOCATION MINNESOTA

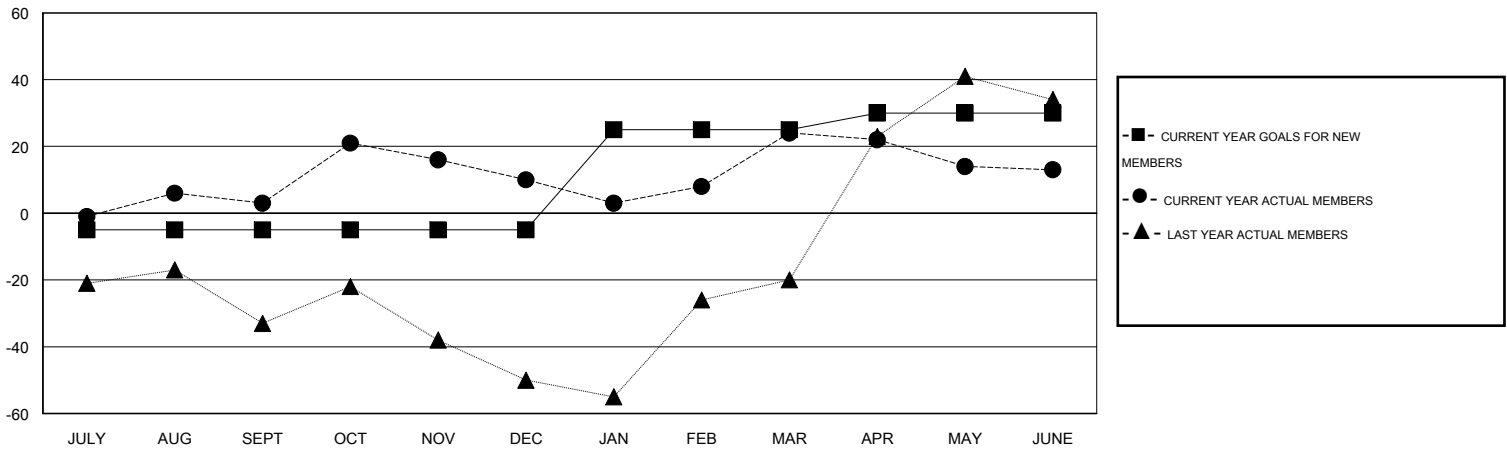
GMT CA 1

Clubs					Members				
RESULTS FOR 2014-2015					RESULTS FOR 2014-2015				
QUARTER	NEW CLUB GOAL	NEW CLUBS	DROPPED CLUBS	NET GAIN/LOSS	QUARTER	NEW MEMBER GOAL	CHARTER AND NEW MEMBERS ADDED	DROPPED MEMBERS	NET GAIN/LOSS
JULY/AUG/SEPT	0	0	0	0	JULY/AUG/SEPT	-5	49	46	3
OCT/NOV/DEC	0	0	0	0	OCT/NOV/DEC	0	53	46	7
JAN/FEB/MAR	1	0	0	0	JAN/FEB/MAR	30	76	62	14
APR/MAY/JUNE	0	0	1	-1	APR/MAY/JUNE	5	75	86	-11

GOALS AND ACTUAL NEW CLUBS CUMULATIVE



GOALS AND ACTUAL MEMBERS CUMULATIVE



DROPPED CLUBS: 1	66 CLUBS OF 78 ADDED 1 OR MORE NEW MEMBERS	<u>GENDER DISTRIBUTION</u>		
		MALE	2,246 (72.90%)	
<u>DROPPED MEMBERS</u>	CLICK HERE FOR HEALTH ASSESSMENT DATA	FEMALE	835 (27.10%)	
DECEASED		26	FAMILY UNIT MEMBERS	597
CLUB CANCELLED		0	HEAD OF HOUSEHOLD	292
OTHER		214	NON-HEAD OF HOUSEHOLD	305
TOTAL	240			